



TOUCHLESS >

AerWave



Hygienic touchless & wireless activation switch

- Active infrared technology
- Pair up to 10 switches to 1 receiver
- Detection indicated by LED/ buzzer

ClearWave



Hygienic touchless activation switch

- Microwave technology
- Mounts flush to the wall
- Constantly illuminated LED

J-Wave



Hygienic, jamb style, touchless activation switch

- Active infrared technology
- Mounts flush to the wall
- Constantly illuminated LED

PUSH BUTTON >

Antimicrobial Copper-Shield Push Pads



Hygienic, copper surfaced, push button activation

- Kills 99.9% of disease-causing bacteria
- Available in hardwired or wireless
- Testing to over 10 million cycles

Push Pads



Stainless steel push button activation

- Available in a range of sizes
- Available in hardwired or wireless
- Testing to over 10 million cycles

WT-400



Slim, wireless, touch switch & receiver

- Pair an unlimited number of WT-400's to 1 receiver
- Dimensions: 40 x 150 x 13mm
- Hardwired model also available

ACTIVATION & SAFETY >

SSR-3-ER



Microwave & active infrared activation & safety

- 4m (w) x 4m (d) detection area
- HA-130 Internal mounting solution
- Features cross traffic filtering for standard & emergency route doors

SSR-3



Microwave & active infrared activation & safety

- 4m (w) x 4m (d) detection area
- HA-130 Internal mounting solution
- Reduce building energy losses by up to 20%

HR100-CT



Active infrared activation & safety

- 3.2m (w) x 2.5m (d) detection area
- HA-121 Internal mounting solution
- Reduce building energy losses by up to 15%

ACTIVATION & SAFETY >

3H-IR14 / 3H-IR14C*



Active infrared activation & safety

- 3m (w) x 2m (d) detection area
- HA-14 Internal mounting solution
- *Also functions as a side screen safety sensor

ACTIVATION >

HR50-UNI / HR50

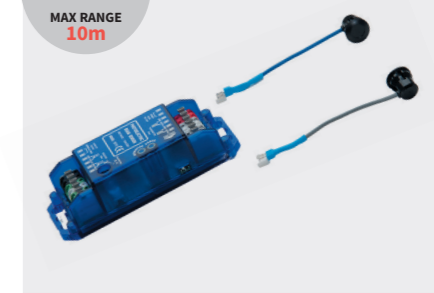


Uni or bi-directional microwave activation

- 5m (w) x 3m (d) detection area
- Wall or ceiling mountable
- Small & extremely robust

SAFETY >

HP1 / HP2



Active infrared safety

- Single / double safety beam
- 10m detection range
- Quick installation

Swing Doors



SAFETY >

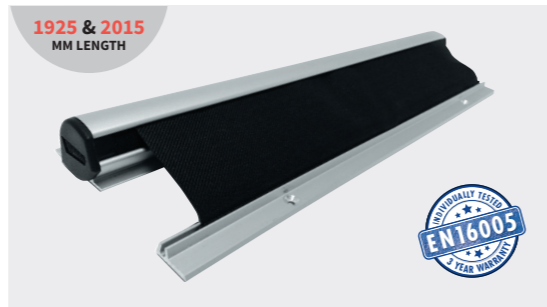
SSS-5



Active infrared safety

- 1m safety field from just 1 PCB unit
- Quick & easy to install
- Available in 3 different lengths

FP200 / FP60



Roller blind style finger protector

- Quick installation
- Tested up to 1 million cycles
- Fire rated

ACTIVATION >

HR50-UNI



Uni-directional microwave activation

- 5m (w) x 3m (d) detection area
- Wall or ceiling mountable
- Small & extremely robust

SSS-5 detection zone



Industrial Doors



ACTIVATION & SAFETY >

KABUTO



Microwave and active infrared activation & safety

- 7m (w) x 9m (d) detection area
- Pedestrian & vehicular traffic recognition
- Uni-directional & cross traffic filtering

HR400-IND



Active infrared activation & safety

- 6m (w) x 4.5m (d) detection area
- Uniquely adjustable detection zone
- HA-131 Internal mounting solution

ACTIVATION >

HR-ROBUS



Microwave activation

- 5m (w) x 8m (d) detection area
- Pedestrian & vehicular traffic recognition
- Uni-directional & cross traffic filtering

SAFETY >

RLK 31



Active infrared reflective light barrier

ACTIVATION >

ULD



Single & dual channel underground loop coil detector

SWITCHES >

Transmitters & Receivers



1, 2 or 4 channel handheld switch & receiver